



# NAVAL AIR STATION LEMOORE ECONOMIC IMPACT







## Leadership Welcome

Naval Air Station (NAS) Lemoore continues to enjoy an atmosphere of mutual respect, cooperation, strong teamwork and common interest in economic enhancement with our local communities. In the following document, we are pleased to present information about the economic impact of NAS Lemoore on the surrounding communities.

In fiscal year (FY) 2008, NAS Lemoore contributed \$654 million to the regional economy, generated approximately \$75 million in federal, state and local tax revenue, and supported more than 4,540 jobs throughout Kings and Fresno Counties. Additionally, 23,456 military and civilian personnel visited NAS Lemoore for training, contributing an economic impact to key service industries, such as retail and hospitality, within the surrounding communities.

In FY 2008, NAS Lemoore also supported 8,713 military retirees and veterans within Kings, Fresno, Merced and Tulare Counties. These retirees and veterans accounted for \$176 million of economic impact in their communities and generated 1,427 jobs in the area.

NAS Lemoore is proud of the enthusiastic relationship we enjoy with our neighbors and throughout the San Joaquin Valley. The commitment of our people to the success of NAS Lemoore will continue to have a significant, positive economic influence on our surrounding communities for many years to come.



**Captain James R. Knapp**  
**Commanding Officer**  
**NAS Lemoore**

## MISSION

*Support the U.S. Pacific Fleet and its mission to train, man, and equip West Coast Strike-Fighter Squadrons so they may be ready to do the nation's business anywhere in the world.*

## History

Commissioned in 1961, NAS Lemoore is the Navy's newest and largest master jet air station. NAS Lemoore is the base for the Pacific Strike Fighter Wing and its supporting facilities. The primary aircraft based at NAS Lemoore is the F/A-18 Hornet Strike Fighter.

In July 1998, NAS Lemoore was selected as the west coast site for the Navy's newest strike-fighter aircraft, the F/A-18E/F Super Hornet, and in November 1999, the first Super Hornet arrived. This action brought approximately 92 additional aircraft, 1,850 additional active duty personnel and 3,000 family members to the installation. NAS Lemoore currently hosts the Navy's entire west coast fighter/attack capability.



## Basic Statistics

### Lands Affected by NAS Lemoore in FY 2008

- U.S. Navy presently owns outright **18,784 acres** at NAS Lemoore
- U.S. Navy presently outleases **12,343 acres** at NAS Lemoore for agricultural use
- U.S. Navy presently has **11,020 more acres** that are under air easement contracts and are used for agriculture
- U.S. Navy presently **manages 150 acres**, set aside to support a small Fresno Kangaroo Rat population, listed as an endangered species

### People Associated with NAS Lemoore in FY 2008

- NAS Lemoore directly employs **7,600** people
- There are **8,713** military retirees in the local region surrounding NAS Lemoore
- NAS Lemoore saw **23,456** transient personnel use the air station for training

### Facts about NAS Lemoore in FY 2008

- NAS Lemoore was the **3rd largest industry in Kings County**
- NAS Lemoore was the **10th largest industry in Fresno County**
- NAS Lemoore is the Navy's **largest** Master Jet Base
- NAS Lemoore averages approximately **210,000 flight operations per year**, making it one of the busiest airfields in the Navy

## NAS Lemoore Economic Benefits

NAS Lemoore is a valuable economic stimulus to the Central Valley community. In FY 2008\*, the installation generated employment for 4,542 area residents and contributed \$654 million to the local economy.

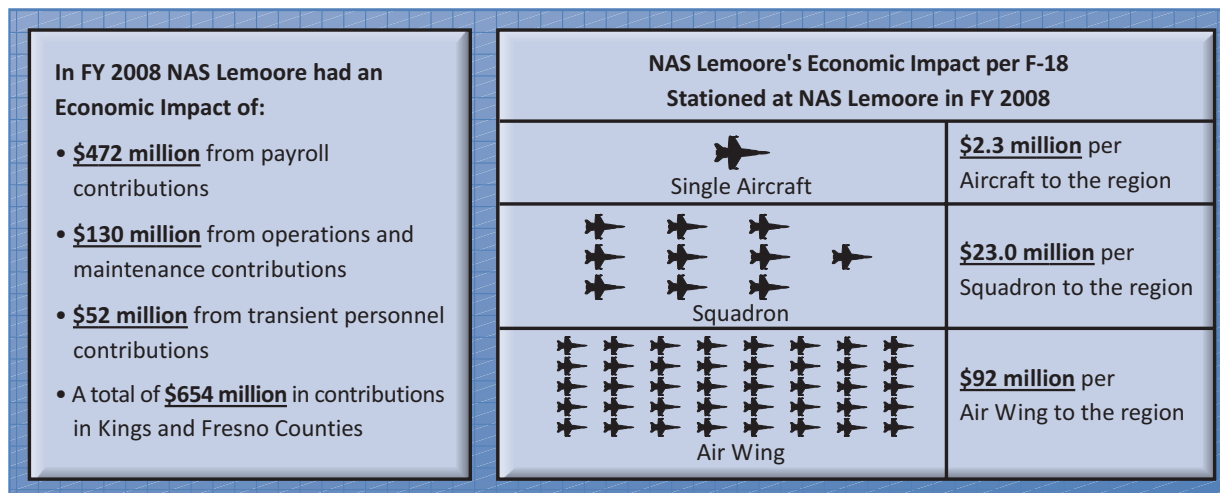
NAS Lemoore sales are initially generated by three sources:

- military and civilian payrolls;
- operations and maintenance contracts; and
- visitor spending by transient personnel.

Initial sales lead to later rounds of sales, according to economic theory, and the results of each round adds to the total economic impact of NAS Lemoore.

Military personnel and their family members receive some medical care from local health care providers, enroll in local school and colleges, and shop local retail and commercial establishments. Also in FY 2008, 23,456 U.S. and foreign military personnel trained at NAS Lemoore. These personnel are partially dependent on services provided by local businesses.

Clearly, NAS Lemoore makes an important annual contribution to the economy of region. This spending originates from outside the region and acts to offset impacts associated with regional and domestic business cycles. NAS Lemoore represents a consistent and stable source of annual economic stimulus to the region.



In FY 2008, NAS Lemoore generated over **4,500 jobs** in the local community and approximately **\$161 million in labor income** associated with those jobs.

Between FY 2010 and FY 2035 NAS Lemoore expects to spend **\$443 million** on military construction (MILCON) projects.

**In FY 2008 NAS Lemoore Contributed:**

- **\$37 million** in state and local tax revenues to the area
- **\$38 million** in federal tax revenue to the area
- **\$0.7 million** in Federal Impact Aid to the area

\* FY 2008 spans from Oct 1, 2007 to Sep 30, 2008

## Payroll and Personnel

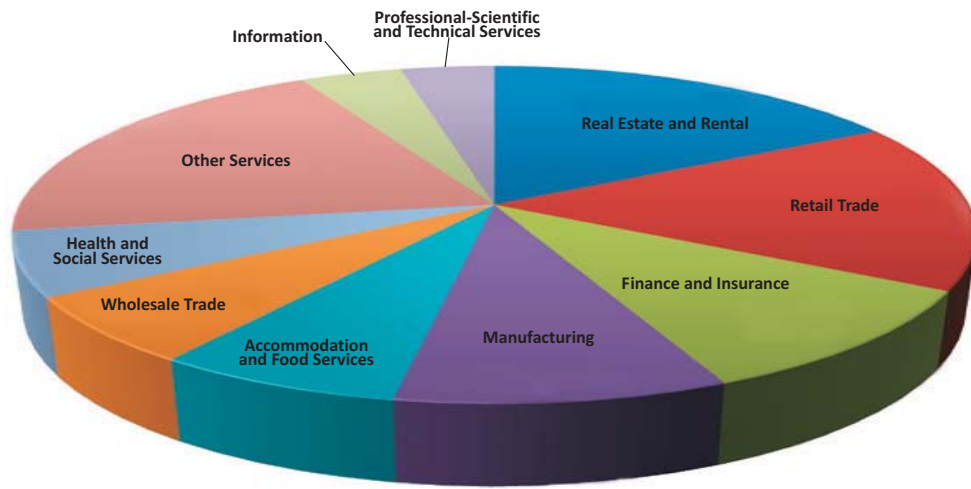
### Employment Associated with NAS Lemoore

Source of Jobs	Number of Jobs	% of Regional Labor Force*
Military Personnel	6,123	1.24%
Government Civilian Personnel	1,074	0.22%
Civilian Contractors at NAS Lemoore	403	0.08%
Jobs Associated with Base's Expenditures in the Region	4,542	0.92%
<b>Total Number of Jobs Associated with NAS Lemoore</b>	<b>12,142</b>	<b>2.46%</b>

\* Regional Labor Force includes labor forces from Kings and Fresno Counties

**In FY 2008 NAS Lemoore generates 12,142 jobs and \$717.5 million in labor income**

### Industries Impacted by Payroll Expenditure



### Labor Income Associated with NAS Lemoore

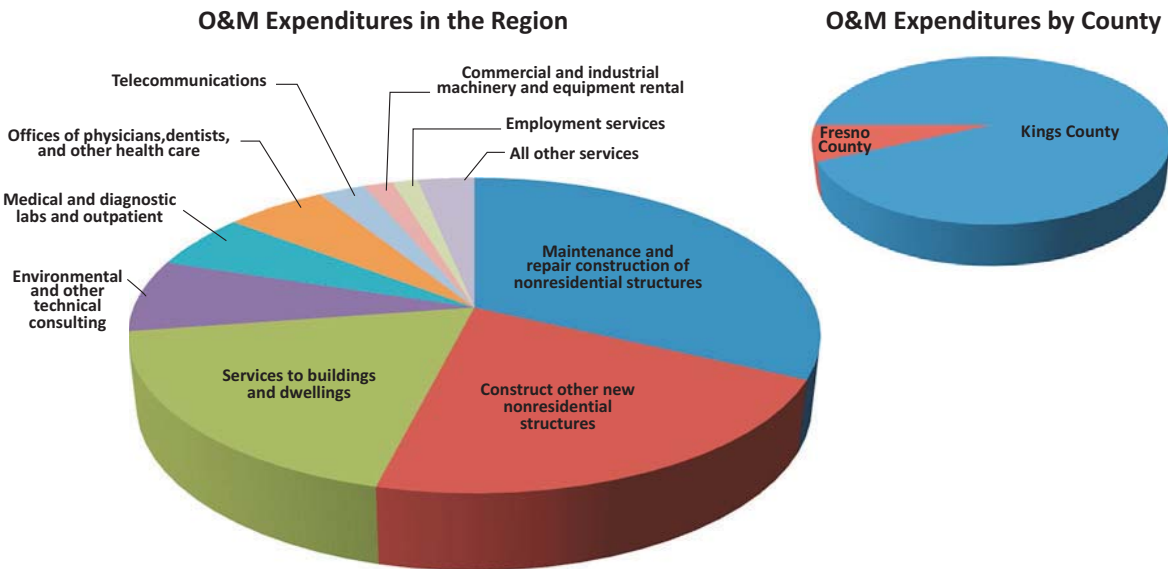
Types of Income	Dollars	% of Regional Personal Income*
Military Payroll	\$483,632,337	1.59%
Civilian Payroll	\$73,005,626	0.24%
Labor Income Associated with Base's Expenditures in the Region	\$160,845,433	0.53%
<b>Total Labor Income Associated with NAS Lemoore</b>	<b>\$717,483,396</b>	<b>2.36%</b>

\* Regional Personal Income includes personal income from Kings and Fresno Counties

## Operations and Maintenance

NAS Lemoore’s operations and maintenance (O&M) generated \$92.7 million direct and indirect expenditures during FY 2008 in Kings and Fresno Counties. 93% of all O&M direct expenditures during FY 2008 went to Kings County. Some of the main O&M services contracted include maintenance and repair, new construction, environmental services, and office administrative services. Between FY 2010 and FY 2035 NAS Lemoore expects to receive over \$443 million for MILCON projects.

**In FY 2008 NAS Lemoore’s operations and maintenance generated expenditures of \$92.7 million in Kings and Fresno Counties**



**In FY 2008 NAS Lemoore’s operations and maintenance expenditures created 841 jobs and \$37.6 million in payroll**

### Jobs and Payroll Generated by O&M Expenditures

	Kings County	Fresno County	Total
Jobs Generated	783	58	841
Payroll Generated	\$35.0 million	\$2.6 million	\$37.6 million

## Transient Personnel

Transient personnel represent personnel, both military and civilian, who come to NAS Lemoore to train but are not stationed at the installation. These personnel inject over \$23 million into the local economy through the purchase of accommodations, food and merchandise.

Detachment	Military Personnel	Civilian Personnel	Total Personnel
Training	19,553	3,573	23,126
VFA-122 and VFA-125	240	0	240
Top Gun	70	20	90
<b>Total</b>	<b>19,863</b>	<b>3,593</b>	<b>23,456</b>

**23,456 personnel associated with training arrived at NAS Lemoore in 2008 and on average spent 20.5 days at the installation**



**Personnel associated with training spent more than \$23 million in the local community during their time at NAS Lemoore**

Areas in Which Training Personnel Spent Their Money	FY 2008 Spending
Retail Stores - General Merchandise	\$6,701,842
Hotels and Motels- Including Casino Hotels	\$23,240
Food Services and Beverages	\$16,754,605
<b>Total</b>	<b>\$23,479,687</b>



## Military Retirees and Disabled Veterans

There are over 8,713 military retirees and disabled veterans in Kings, Fresno, Merced and Tulare Counties receiving over \$272 million in federal payments, in these counties. This group is drawn to the area due to the facilities offered to them through NAS Lemoore. These persons, through their spending, also have a profound effect on local jobs and the revenues they generate.

Retiree Categories	Kings County	Fresno County	Merced County	Tulare County	Total Region
Total Disabled Retirees	77	487	43	131	738
Total Other Retirees	1,844	3,263	1,581	1,287	7,975
<b>Total</b>	<b>1,921</b>	<b>3,750</b>	<b>1,624</b>	<b>1,418</b>	<b>8,713</b>

**More than 8,700 military retirees and disabled veterans near NAS Lemoore receive over \$272 million in payments from the federal government**



### Spending by military retirees and disabled veterans generated:

- 1,427 jobs in the local communities
- \$13.0 million in federal tax revenue
- \$14.6 million in local/state tax revenue

Federal Funds Payment Category	Kings County	Fresno County	Merced County	Tulare County	Total Region
Federal Retirement and Disability Payments-Military	\$32,733,000	\$31,770,000	\$34,781,000	\$12,672,000	\$111,956,000
Other Veterans' Related Payments	\$18,963,597	\$78,969,483	\$23,797,574	\$39,268,248	\$160,998,902
<b>Total</b>	<b>\$51,696,597</b>	<b>\$110,739,483</b>	<b>\$58,578,574</b>	<b>\$51,940,248</b>	<b>\$272,954,902</b>

## Tax Revenue

Tax revenues generated from the economic activity of the installation provide additional revenue to local, state and federal governmental entities. As a contributor, the installation and the military retirees generated approximately \$102.9 million in total tax revenue during FY 2008.

### FY 2008 Tax Revenues Generated by NAS Lemoore, Military Retirees and Disabled Veterans

	Federal	State/Local	Total Taxes
Payroll	\$27.8	\$29.6	\$57.0
Operations (Contracts)	\$7.7	\$4.4	\$12.1
Transients	\$3.1	\$3.1	\$6.2
Retirees and Veterans	\$13.0	\$14.6	\$27.6

**In FY 2008 NAS Lemoore and associated military retirees generated approximately \$102.9 million in total tax revenue**

**In FY 2008 Kings County received approximately \$750,000 in Federal Impact Aid and Payments in Lieu of Taxes**

### Types of Taxes Generated in FY 2008

	Corporate Profits Tax/Dividends	Indirect Business Taxes	Personal Income Tax	Other Personal Taxes	Social Insurance Tax	Total Taxes
Payroll	\$9,546,831	\$23,768,745	\$11,203,095	\$799,555	\$11,717,442	\$57,035,668
Operations (Contracts)	\$1,373,206	\$2,654,156	\$3,862,623	\$275,672	\$3,889,371	\$12,055,029
Transients	\$651,768	\$2,580,392	\$1,330,442	\$94,952	\$1,484,356	\$6,141,910
Retirees and Veterans	\$5,098,680	\$11,957,783	\$4,911,497	\$358,740	\$5,298,330	\$27,625,030

## Environmental and Civil Stewardship

### Community Outreach

NAS Lemoore personnel routinely participate and volunteer to the following local organizations, events and charities:

- United Way
- St. Vincent DePaul
- YMCA
- Hannah House
- Local animal shelters
- Habitat for Humanity
- Salvation Army
- Boy Scouts
- Girl Scouts
- Kings River clean-up events



### Community Services



- NAS Lemoore's Commanding Officer regularly speaks at local events and participates in local civic organizations
- NAS Lemoore hosts small business construction symposiums that focus on educating contractors in the federal process, and increasing local participation in contract solicitations
- Red Cross hosts blood drives at NAS Lemoore several times a year
- NAS Lemoore Color Guard provides ceremonial and burial support
- NAS Lemoore provides Power-of-Attorney and Notary Public services for retired/civilian dependents/National Guard/recruiters in the area, in addition to other various legal services
- NAS Lemoore provides Personal Financial Management programs for retired/civilian dependents/National Guard/recruiters in the area
- NAS Lemoore hosts the Ombudsman Program for the military retirees in the area

## Environmental and Civil Stewardship

### Fire and Rescue

- In FY 2008, NAS Lemoore established an Emergency Operations Center. NAS Lemoore is the emergency response headquarters for disasters in the area
- NAS Lemoore provides training for local law enforcement entities and first responders
- NAS Lemoore Fire Department provides mutual aid to surrounding communities as requested
- NAS Lemoore holds regular emergency response exercises with:
  - Strike Fighter Wing Pacific
  - Fresno County Sheriff
  - California Highway Patrol
  - City of Fresno Office of Emergency Services
  - State of California Region V Office of Emergency Services



## Environmental and Civil Stewardship

### Reduction in Energy Consumption

NAS Lemoore is doing its part to reduce its use of key resources in the local area. From 2006 to 2007, NAS Lemoore reduced its electrical consumption on the installation by 6%, its water consumption by 3% and its natural gas consumption by 12%. These reductions were so great that NAS Lemoore was honored in October of 2007 during the annual SECNAV Energy Awards. To date, NAS Lemoore has obligated \$5.9 million in energy efficient facilities upgrades and photovoltaic projects in order to reduce its resource imprint on the community. In FY 2008 NAS Lemoore's Energy and Water conservation program received a "**Gold Level Achievement**" rating from the Secretary of the Navy's Energy and Water Management Awards Program. The award equates to a "very good to outstanding" level of energy and water conservation program. This marks the seventh year in a row that NAS Lemoore has received the prestigious Gold-level rating.

### Recycling Program Pays for Itself

NAS Lemoore has implemented an Integrated Solid Waste Management Program to optimize the collection of both recyclable and refuse material. This program ensures recyclables are captured, so these materials do not find their way to the local landfills, saving precious space. The installation has diverted over 1,607 tons in solid waste, construction and demolitions debris generated by base projects, denoting a 39% diversion rate. Additionally, it instituted a furniture re-use program which has diverted over 2.2 tons from the landfill and saved the installation over \$104,000. In order to continue supporting the installations aggressive recycling program, a new position was created.



Routinely, NAS Lemoore service members relocate every two to three years or conduct local moves to or from the installation. The recycling department implemented a "take a box leave a box" program. The program consists of re-using moving boxes and packing materials and is designed to offset the moving costs incurred by our service members and their family.

### Lemoore Saves Water



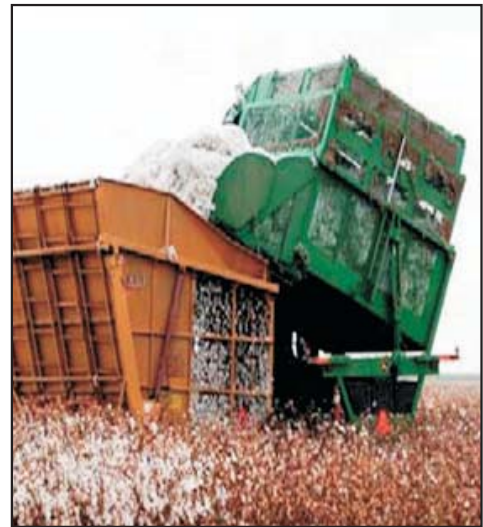
Water in Kings and Fresno Counties is a precious commodity, and NAS Lemoore is doing its part to reduce the amount of water it uses. An example of this commitment can be seen in NAS Lemoore's implementation of smart landscaping techniques. In 2008, the installation converted 12 acres of turf to low maintenance and drought tolerant plants and curtailed watering in non-core areas. The implementation of these techniques aid the installation in reducing its water consumption by 20% and saving water that might otherwise have been wasted.

## Environmental and Civil Stewardship

### Agricultural Leases

NAS Lemoore is one of the largest leaseholders of agricultural land in Kings and Fresno Counties. Through the largest program in the Navy, NAS Lemoore leased 12,343 acres of farmlands in 2007. From these leases, it is estimated the local community gained millions of dollars from the value of the crops, farm machinery services and labor derived from these leased lands.

Additionally, the funds generated from these leases were funneled back in to aid the installation in its stewardship of the many biological resources that call NAS Lemoore home.



### A Year-Round Home for Wildlife

NAS Lemoore believes in being a good steward for all the natural resources under its protection. NAS Lemoore provides a year-round wildlife habitat for 183 native and migratory species, including endangered species and species of concern. The installation is home to one of the few remaining Fresno Kangaroo Rat populations in Kings County, as well as the largest nesting population of burrowing owls in the Central Valley. These populations would be highly stressed if lands under the installation's protection were developed rather than managed. As a result, native species in the area are thriving under the stewardship of NAS Lemoore.





**For more information please contact**

**NAS Lemoore Public Affairs Office**

**Email: [lemr\\_pao@navy.mil](mailto:lemr_pao@navy.mil)**

**Phone: (559)998-3393**

**Fax: (559)998-3395**

