

**HOUSING WAREHOUSE
LOANER FURNITURE
and
PARTIAL/FULL TOUR FURNITURE
PROGRAM**

NSA Housing Warehouse

- Located Off-Base
- GPS: N41.00449, E14.24505
- Hours of Operation: 0800-1545
- Phone: DSN 629-4242 / Comm: 081-811-4242

After hours contact NSA Quarterdeck

- Phone: DSN 629-5547 / Comm: 081-568-5547

Furnishings

- **Loaner Program**
 - 90 days arrival
 - 90 days departure
 - 3-day lead time for delivery
 - Request for delivery and/or pick through the HSC (not the warehouse)
 - Member or spouse must be home
 - \$60 fee for missed appointment
 - Extension granted on case by case (only due to extenuating circumstances)

FERROVIARIA

Pivotal Coop Lavoro
& Giustizia SRL

POLO
CALZATURINO
GONSOZZI SPA

Carineta

via Caigiano

Caigiano

NSA Naples
Support Site

Via Modigliani

Via Trento

Via Andrea Bonanni

Via Salvatore

Country
House SAS

Via Francesco De Sanctis

Via De Sanctis

Housing
Warehouse

Via Marzulli

NSA Naples Housing Service Center (HSC) - Area Orientation



Partial/Full Tour Furnishing

- OFF-BASE
 - Available upon request:
 - Refrigerator
 - Washer & Dryer
 - Gas Stove
 - Microwave
 - AFN Decoder (satellite dish not provided)
 - Transformer (2 per household)
 - Wardrobe (1 each per family member)
 - Freezer chest (subject to stock levels)

Partial/Full Tour Furnishing

- Off-Base
 - Requested during lease signing
 - Request for pick up at Housing Office
 - 3-day lead time required
 - Member or spouse must be home
 - \$60 fee for missed appointment
 - \$60 fee for re-deliver
 - \$120 fee for relocation from one economy lease to another economy lease

Partial/Full Tour Furnishing

- Off-Base
 - Showroom containing sample PFTF/loaner furniture available at HSC
 - Member's responsibility:
 - Ensure to order the correct appliances
 - Take measurements of doorways and proposed location of PFTF
 - Take photos (if possible)
 - Note connections for European vs. US appliances

Partial/Full Tour Furnishing

- ON-BASE
- Available in the unit
 - Refrigerator
 - Washer/Dryer
 - Stove
 - Microwave
 - Dishwasher
 - Chest Freezer

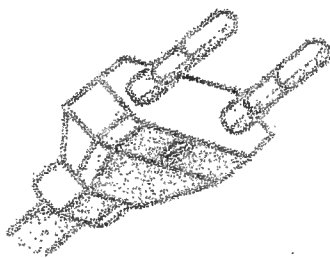
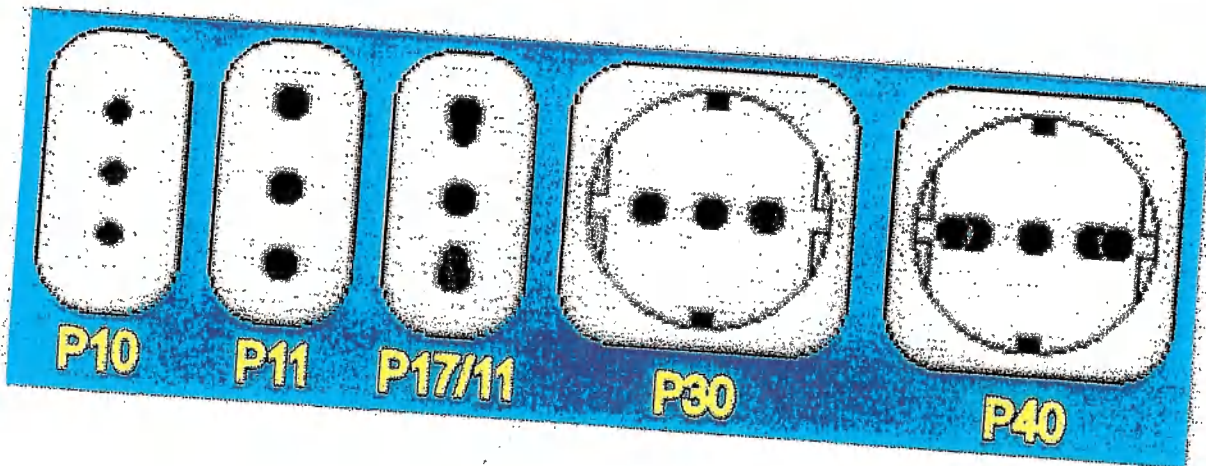
HOUSING WAREHOUSE APPLIANCE SPECS

| REFRIGERATOR MODEL | SIZE | MEASUREMENTS - INCHES |
|--|----------|-------------------------|
| RAYMOND | LARGE | W 28" x D 28" x H 74" |
| RAYMOND | SMALL | W 24" x D 24" x H 74" |
| INDESIT | LARGE | W 28" x D 29" x H 75" |
| WHIRLPOOL | LARGE | W 29½" x D 32" x H 68" |
| WHIRLPOOL | LARGE | W 27½" x D 28" x H 74" |
| WHIRLPOOL | SMALL | W 24" x D 25" x H 74" |
| ARISTON-HOTPOINT | LARGE | W 28½" x D 27" x H 74.5 |
| WHITE-WESTINGHOUSE | LARGE | W 30" x D 31" x H 64" |
| IGNIS | SMALL | W 24½" x D 25" x H 66½" |
| <i>(Standard handle is on the left).</i> | | |
| WASHER MODEL | | MEASUREMENTS - INCHES |
| WHIRLPOOL - US - TOP LOAD | | W 27½" x D 27" x H 43" |
| LG - US - TOP LOAD | | W 25" x D 26" x H 39½" |
| ARDO - EU | | W 24" x D 24" x H 34" |
| HOOVER - EU | | W 24" x D 27" x H 34" |
| WHIRLPOOL - EU | | W 24" x D 24" x H 35" |
| DRYER MODEL | | MEASUREMENTS - INCHES |
| WHIRLPOOL - US - TOP LOAD | GAS | W 28" x D 31" x H 43½" |
| ARDO - EU | ELECTRIC | W 24" x D 24" x H 33½" |
| WHIRLPOOL - EU | ELECTRIC | W 24" x D 24" x H 33½" |
| HOOVER - EU | ELECTRIC | W 24" x D 24" x H 33" |
| STOVE MODEL | SIZE | MEASUREMENTS - INCHES |
| RAYMOND | LARGE | W 36" x D 26" x H 35" |
| RAYMOND | SMALL | W 24" x D 26" x H 35" |
| GLEM | LARGE | W 35½" x D 26" x H 34½" |
| <i>(Ovens also have electric broiler. Glass top 57" high).</i> | | |
| OTHERS | SIZE | MEASUREMENTS - INCHES |
| MICROWAVE | LARGE | W 22" x D 22" x H 15" |
| MICROWAVE | SMALL | W 19" x D 18" x H 12" |
| FREEZER - WHIRLPOOL | SMALL | W 23" x D 28" x H 35" |
| DEHUMIDIFIER - DELONGHI | | W 14" x D 12" x H 35" |
| WARDROBE | | W 48" x D 23" x H 74" |

Outlets and plugs for domestic use in Europe are not unified under a common technical standard because of the reluctance of the various countries to abandon their system. Almost all countries have their own national system of outlets and plugs.

In Italy, the sockets and household plugs are regulated by the standard CEI 23-50 "Prese a spina per usi domestici e similari".

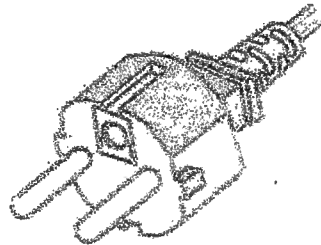
The standard provides prescriptions regarding the sockets and plugs for domestic and similar use fixed and mobile for alternating current only, with or without earth contact, with a nominal voltage above 50 V but not higher than 440 V and with a nominal current not exceeding 32 A (in case of fixed sockets the rated current is limited to 16 A), used both indoors and outdoors. It also provides indications about the earthing requirements, in particular it establishes that the contacts relating to earthing must make contact with the relative ground connection of the socket, before the poles of the plug on which the electric voltage is exerted; it follows that if the plug is removed from the socket, the active poles will be interrupted first and the earth connection will be interrupted.



Type C



Type L



Type F

P10 : Very well known and appreciated in the past it allowed to connect almost any appliance that did not exceed the nominal value of 10A (about 2000 W). This socket accepts 4.0 mm round contacts on 19 mm centers. But over time, however, it is installed less and less, being replaced by the bivalent or multi-purpose socket

P17/11



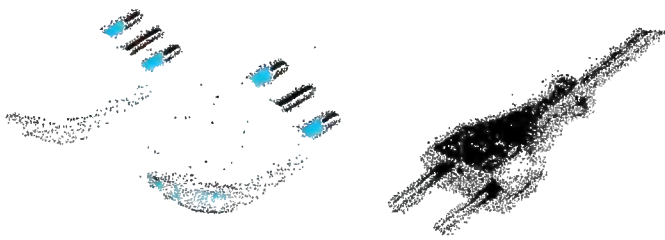
Plugs that can be used with power socket
P10.

P11: When the load does not allow the use of the P10, then the P11 is used, which is not compatible with plugs fitting the P10. In fact, the P11 sockets is designed for 16 A, at 250 V and accepts 5.0 mm round contacts on 26 mm centers. Consequently, to make small appliances work with a P10-plug it will be mandatory to use an adapter. For this reason the new installations use the P17 / 11.



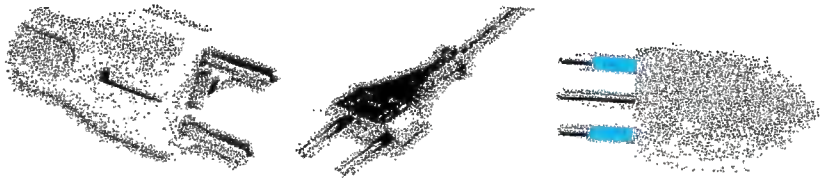
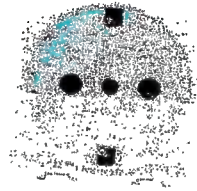
Plugs that can be used with power socket **P11**.

P17/11: The P17/11 is a bivalent electrical outlet. It is designed for a nominal load of 16A, at 250 V. This outlet include both the P10 and P11 and can be said to be the most used.



Plugs that can be used with power socket P17/11

P30: It is possible to recognize this power outlet by the two 4.8mm round holes 19 mm apart from each other for live and neutral pins along with a pair of thin grounding clips at the top and bottom. It is designed for a nominal load of 16A, at 250 V and is also called Shuko.



Plugs that can be used with power socket P30

