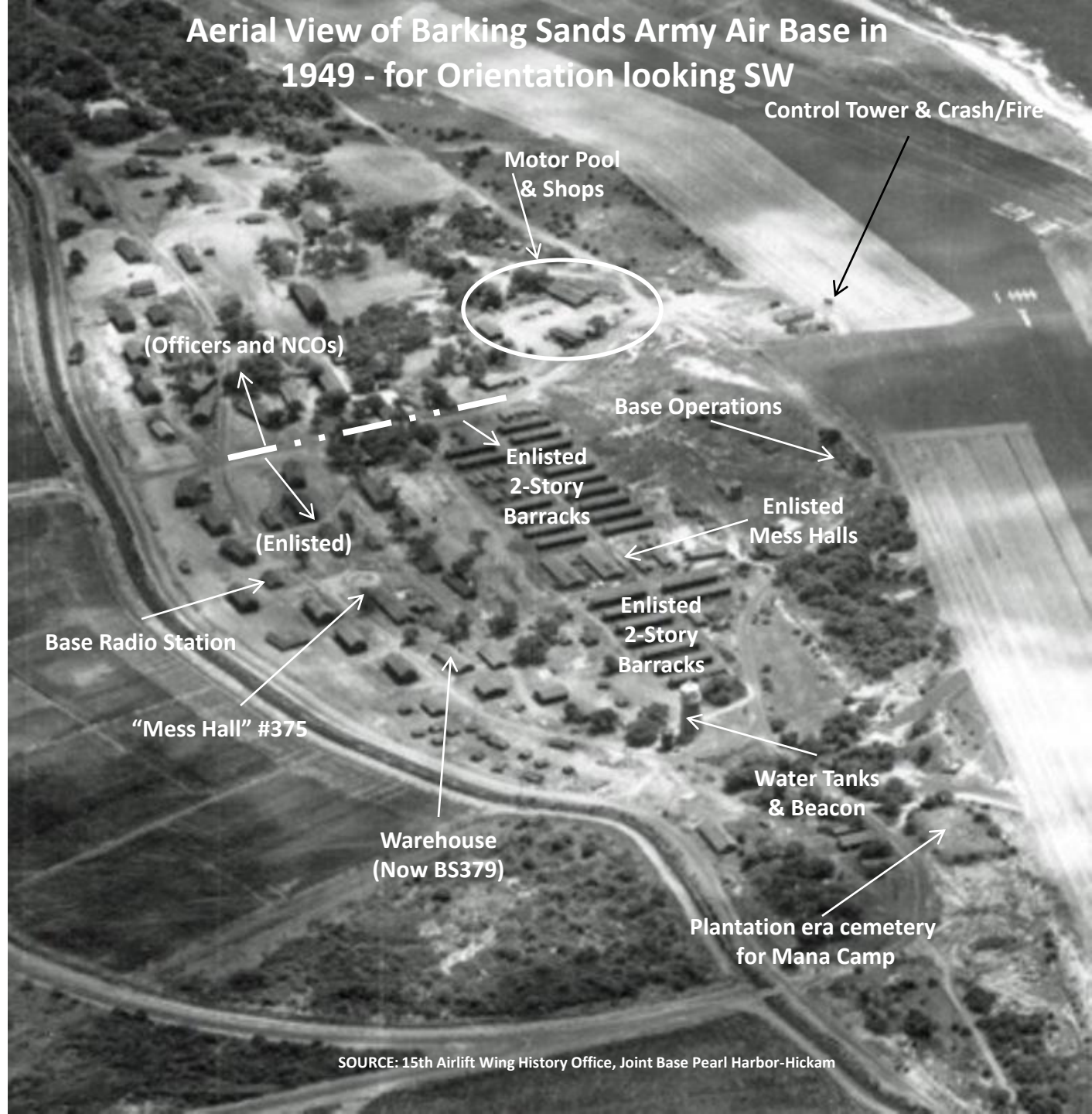


**Aerial View of Barking Sands Army Air
Base in 1949 - for Orientation looking
NW**

SOURCE: 15th Airlift Wing History Office, Joint Base Pearl Harbor-Hickam

Aerial View of Barking Sands Army Air Base in 1949 - for Orientation looking SW



Control Tower & Crash/Fire

Motor Pool & Shops

(Officers and NCOs)

Base Operations

Enlisted 2-Story Barracks

Enlisted Mess Halls

(Enlisted)

Enlisted 2-Story Barracks

Base Radio Station

"Mess Hall" #375

Warehouse (Now BS379)

Water Tanks & Beacon

Plantation era cemetery for Mana Camp